



Kingman County Sheriff's Office

Randy L. Hill, Sheriff

Kingman County Law Enforcement Center
120 N. Spruce, Kingman KS 67068
Phone: 620-532-5133

FOR IMMEDIATE RELEASE – Oct. 20, 2017

For more information, contact Nancy D. Borst, 620-532-2037 / nborst@kingmancoks.org

Sheriff to offer drug 'take back' on Oct. 28

The Kingman County Sheriff's Office again will participate in a drug "take back" event for expired, unused and unwanted prescription drugs from 10 a.m. to 2 p.m. on Saturday, Oct. 28.

Kingman County Sheriff Randy L. Hill has announced that two drop-off locations will be set up that day in Kingman County: at the Kingman Law Enforcement Center, 120 Spruce in Kingman; and the Cunningham Clinic, 120 N Main in Cunningham.

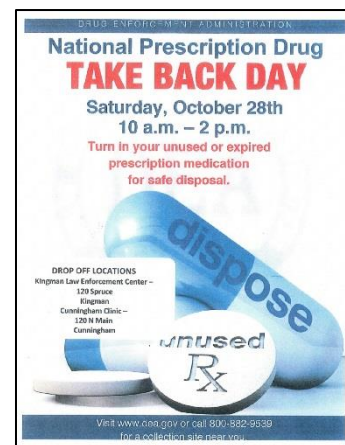
Only pills and patches will be accepted – no needles, sharps or liquids. This service is free and anonymous – no questions asked.

The National Prescription Drug Take-Back addresses a vital public safety and public health issue. Many Americans are not aware that medicines that languish in home cabinets are highly susceptible to diversion, misuse and abuse. Rates of prescription drug abuse in the U.S. are at alarming rates, as are the number of accidental poisonings and overdoses due to these drugs.

Studies show that many abused prescription drugs are obtained from family and friends, including from the home medicine cabinet. In addition, many Americans do not know how to properly dispose of their unused medicine, often flushing it down the toilet or throwing it away – both potential safety and health hazards.

For more information about the safe disposal of prescription drugs or this event, go to www.dea.gov or call the Sheriff's Office at 620-532-5133.

###



Everyone charged with a criminal offense shall be presumed innocent until proven guilty according to the law.