



Kingman County Commission

Fred Foley, County Commissioner District #1
Carol F. Voran, County Commissioner District #2
John Steffen, County Commissioner District #3

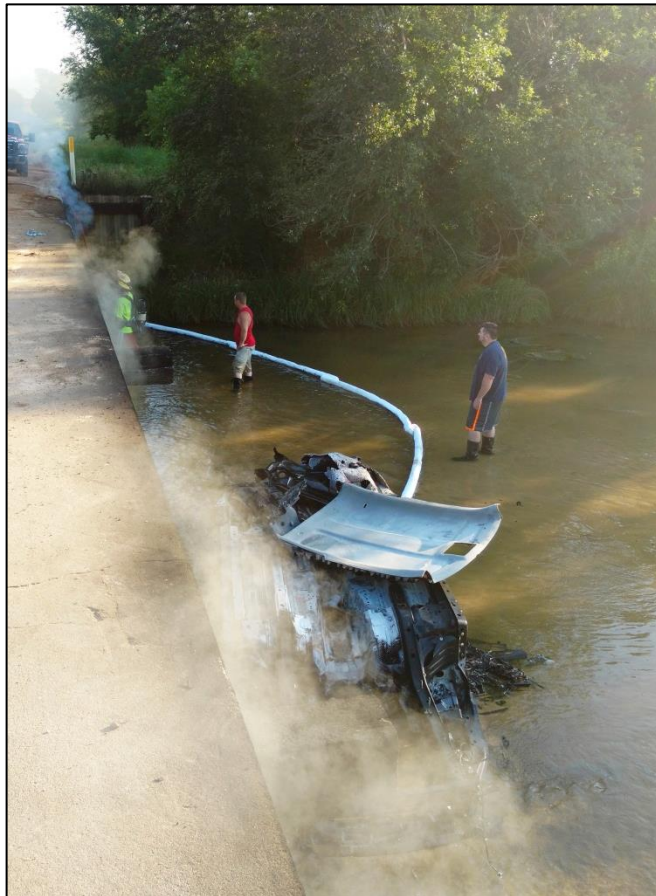
Kingman County Courthouse, 130 N. Spruce, Kingman KS 67068
Office of the County Clerk: Phone: 620-532-2521 / Fax: 620-532-5082

FOR IMMEDIATE RELEASE – June 28, 2016

For more information, contact Nancy D. Borst, 620-532-2037 / nborst@kingmancoks.org

Fire damages Kingman County bridge

A Kingman County bridge suffered extensive damage early Saturday, June 25 as the result of a fire.



The Norwich and Kingman fire departments, Kingman County Sheriff's Office and Kingman County Emergency Management responded to the Dale #20 Ninnescah River bridge on SE 80th Avenue after a 911 call at 5:58 a.m.

First responders found a burning, unoccupied vehicle in the river near the bridge, which also was on fire.

In the course of fighting the flames, booms were deployed on the river to catch creosote seeping from the bridge. Two firefighters suffered minor injuries and were treated at Kingman Community Hospital. KDHE was notified of the incident.

The bridge is between SE 20th Street and SE 30th Street in the eastern half of the county. The 344-foot bridge includes spans with steel piling and spans with wood piling.

Kingman County Commissioners at their weekly meeting Monday approved asking Kirkham Michael Consulting Engineers to do an assessment of the damaged bridge. The county also will check to see if the damage is

covered by the county's insurance.

County Engineer Steve Bachenberg said the bridge likely is a complete loss. It has been closed indefinitely.

Sheriff Randy Hill said his office is investigating the incident.

###

PHOTO INFORMATION: Members of the Norwich Fire Department combat a vehicle and bridge fire June 25 in Kingman County. Booms were deployed to catch creosote seeping from the burning bridge. Photo by Fred Simon, Kingman County Emergency Manager.